

New EU Construction Products Regulation (CPR)

Implementation timeline for C € marked

Building Hardware



Stephan Schmidt (DE), ARGE WG Standardization

Håkan Hedlund (SE), CEN TC33/WG 4 Convenor



ARGE Conference 2025

Content

- ➔ Introduction
- ➔ Background and overview
- ➔ Standardization Request
- ➔ Timetable
- ➔ Consequences and Take away ...

Background - Revision of CPR

Stephan

No L 40/12

Official Journal of the European Communities

11. 2. 89

COUNCIL DIRECTIVE

of 21 December 1988

**on the approximation of laws, regulations and administrative provisions of the Member States
relating to construction products**

(89/106/EEC)

4.4.2011

EN

Official Journal of the European Union

L 88/5

REGULATION (EU) No 305/2011 OF THE EUROPEAN PARLIAMENT AND OF THE COUNCIL

of 9 March 2011

laying down harmonised conditions for the marketing of construction products and repealing Council Directive 89/106/EEC

2024 April 10th: The EU-Parliament voted with YES



Rapporteur: Christian Doleschal
IMCO-Committee

Corrigendum – Process
New Vote was in autumn 2024

The revised CPR



Official Journal
of the European Union

EN

L series

2024/3110

18.12.2024

REGULATION (EU) 2024/3110 OF THE EUROPEAN PARLIAMENT AND OF THE COUNCIL

of 27 November 2024

laying down harmonised rules for the marketing of construction products and repealing Regulation (EU) No 305/2011

CPR Revision - Version 2024/3110

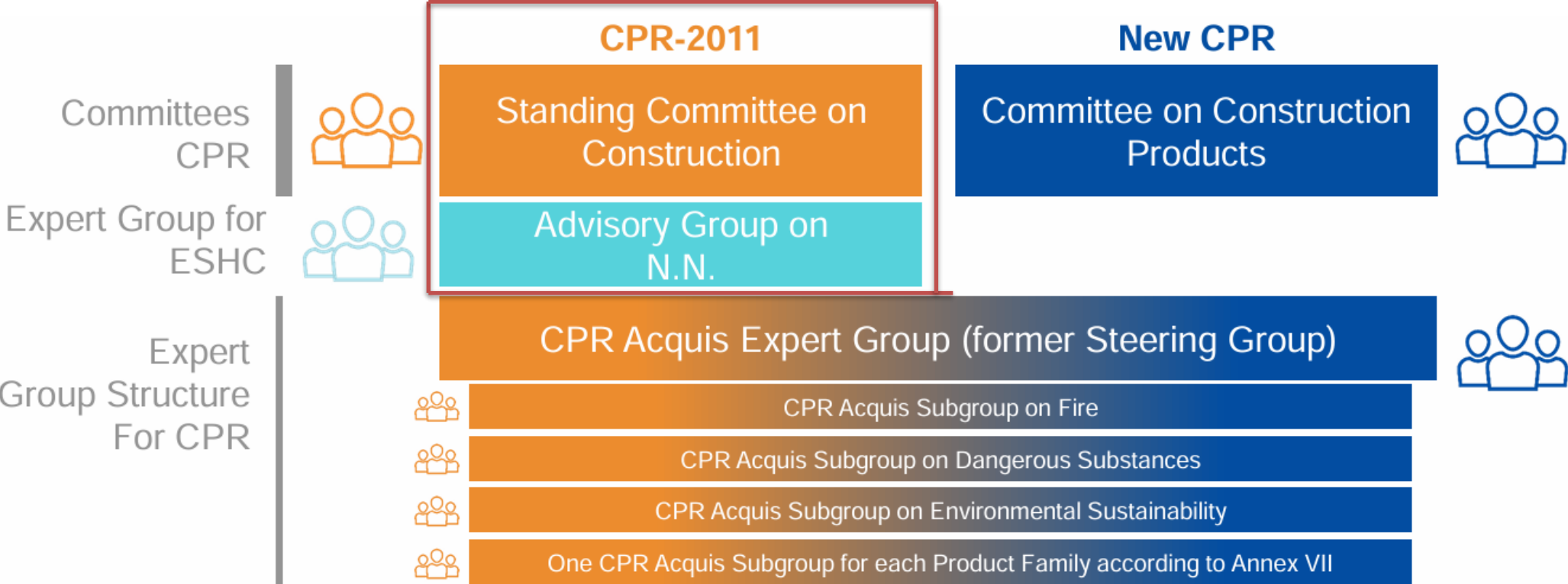
➔ Starting with 115 “Remarks” and followed by 96 “Articles” in 15 Chapters

- ➔ 1 General Provisions
- ➔ 2 Procedure, Declarations and Markings
- ➔ 3 Obligations and Rights of economic Operators
- ➔ 4 European Assessment Documents
- ➔ 5 Technical Assessment Bodies
- ➔ 6 Notified Authorities and notified Bodies
- ➔ 7 Simplified Procedures
- ➔ 8 Market Surveillance and safeguard Procedures
- ➔ 9 Information and administrative Cooperation
- ➔ 10 Digital Product Passport

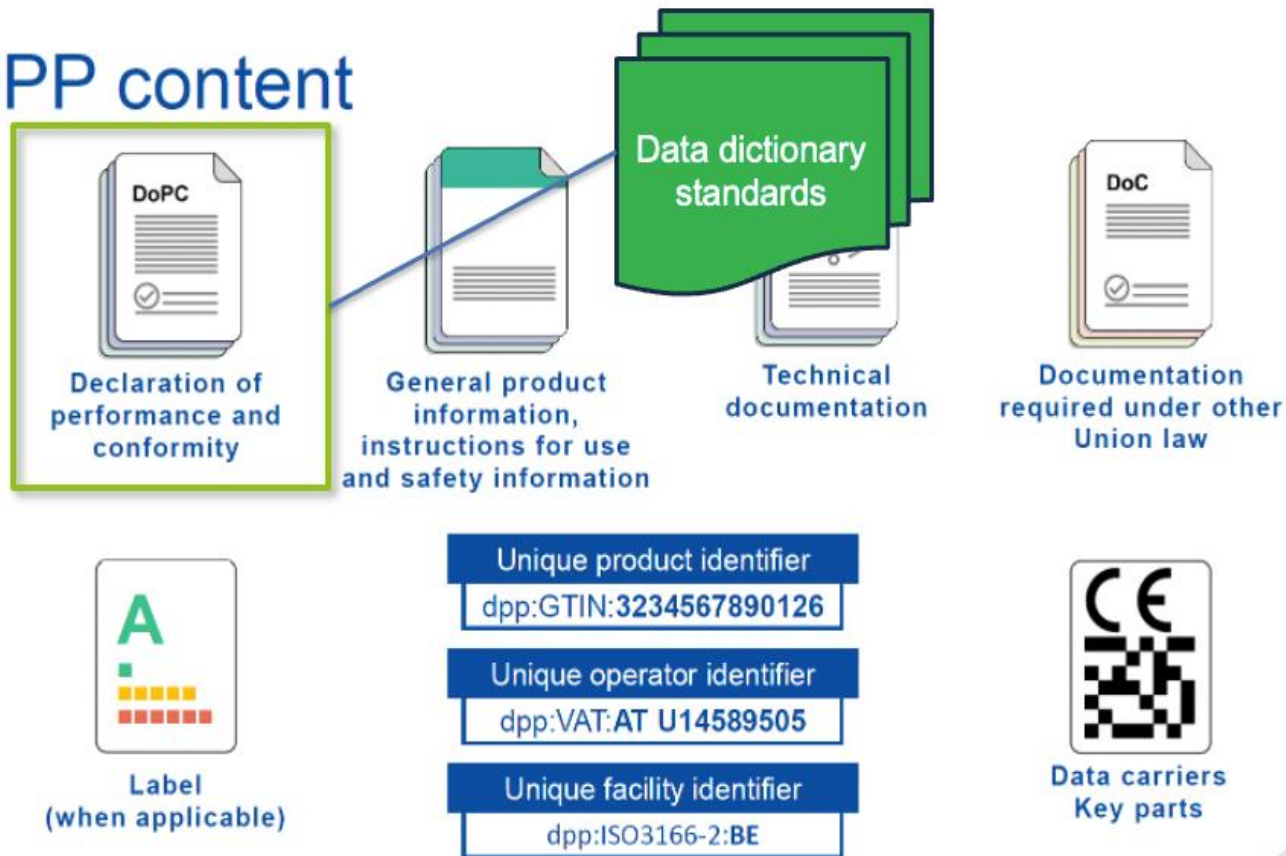
- ➔ 11 International Cooperation
- ➔ 12 Incentives and public Procurement
- ➔ 13 Regulatory status of Products
- ➔ 14 Emergency Procedures
- ➔ 15 Final Provisions

Annex I	Basic requirements
Annex II	...environmental characteristics...
Annex III	Product requirements
Annex IV	...general information, use, safety
Annex V	DoPC

Stephan



DPP content



What we have to mention... overflow of information



The new CPR - Construction Product Regulation – Overview

- The new CPR 2024/3110 https://eur-lex.europa.eu/legal-content/EN/TXT/?uri=OJ:L_202403110
- Building hardware - CE marking of **lockcases, door closers, hinges, panic exit devices, emergency locks**, when the intended use is for on fire doors and/or emergency exits – Harmonized zone.
- The outcome of the CPR acquis process is the **Standardization Request**
 - Sets-up the specs of our future harmonized standards and CE marking.
 - Our wish, as ARGE, is to keep the CE marking to CPR as it is. That is the position of ARGE during the ongoing discussions with the European Commission.

Impact for our products – Building Hardware

- All our products are in the scope of the new CPR - Regardless if they are considered as *Construction products* or *Key parts*
- **But...only the ones subject to a mandatory harmonized standard will be CE marked**
- The **harmonized zone is set-up in the Standardisation Request**, the main deliverable of the CPR acquis process
- ARGE is involved in the CPR acquis and draft standardization processes, either within each Member State Government, CPE and/or CEN, to defend our position.



Draft standardization request – What does it mean for us?

- Objective for ARGE – Status Quo
- Draft is expected mid September
- **No major changes for the characteristics on today's CE marked Building hardware**
 - Essential characteristics – Product requirements
 - Different structure on future harmonized standards
- **What is new?**
 - DoPC – Declaration of Performance and Conformity
 - gathering the Declaration of Performance (DoP) and Declaration of Conformity (DoC)
 - Sustainability aspects – EPD
 - cover the essential characteristics related to life cycle assessment, such as described in EN 15804 and EPDs
 - DPP – Digital Product Passport
 - Product information
- **The new rules of the new CPR will be applicable to our products only when the relevant harmonized standards are revised and published in OJEU.**

draft standardization Request – Building hardware

- Lockcases – EN 12209, EN 14846 and EN 15685
- Emergency and panic devices – EN 179 and EN 1125
- Hinges – EN 1935 and EN « multi axis hinges »
- Door closers, hold open devices and Door coordinators – EN 1154, EN 1155 and EN 1158

(b) Essential characteristics, classes, and thresholds

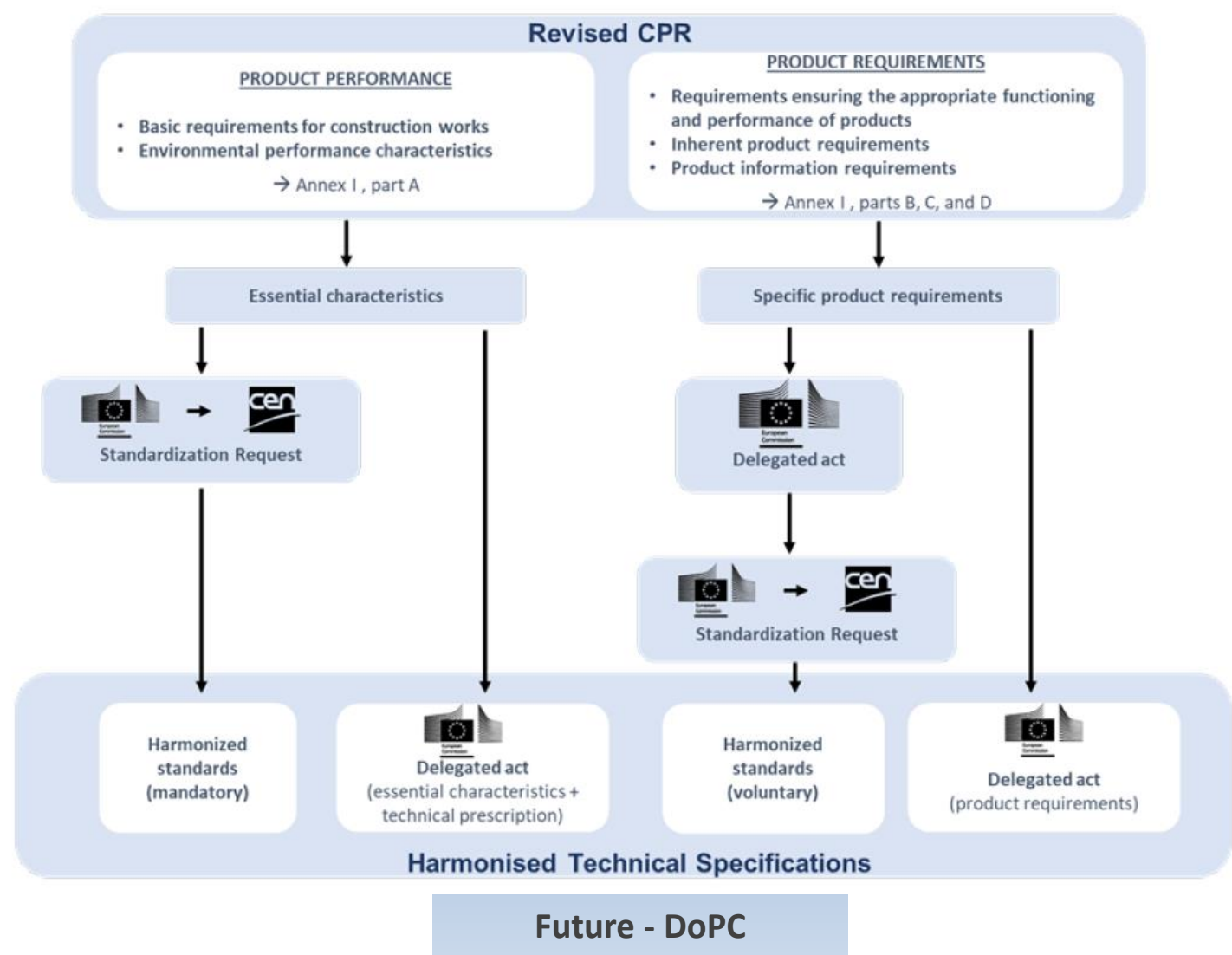
Group (BRCW)	Essential characteristic	EU threshold	Class	Comments	Annex III
Fire safety (2)	Reaction to fire		■	E, D, C, B, A2, A1 (+ s, d)	Part A – 1
	Bar projection	≤ 150 mm	■	Mandatory, to avoid injuries in case of panic	Part A - 54
	Release force without load of 1000N	≤ 80 N	■	Mandatory	Part A - 56
	Release force with load of 1000N	≤ 220 N	Level	Mandatory	Part A - 57
	Re-engagement force	≤ 50 N	■	Mandatory to declare if installed on fire doors	Part A - 58



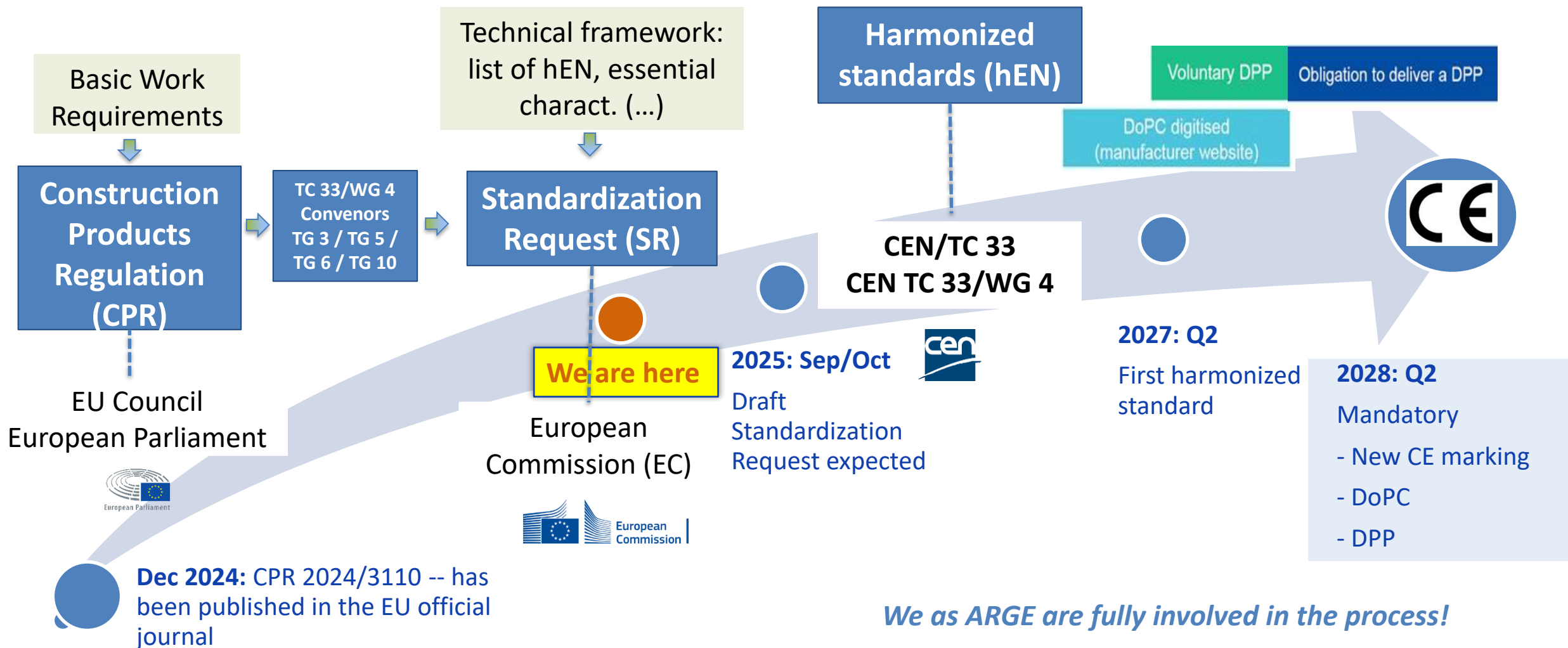
Up to four standards for one product

1. Essential characteristics, including environmental sustainability and product information
2. Product requirements
3. Voluntary aspects (if any)
4. Assess (test) methods

Product Performance/Product Requirements for CE Products



From CPR to hEN for TC 33/WG 4 - Building hardware



Take away from this presentation ...

- ➡ **CPR:** 18 December 2024: The CPR 2014/3110 ND published in the OJEU
- ➡ **Standardization Request:** We have used the last opportunity to influence the content, so it is reasonable for Building Hardware industry
- ➡ **ARGE Strategy:**
 - a) Change as little as possible for building hardware
 - b) Remain independent from doors/windows and focus on logical and consistent solutions
- ➡ **When?** 2028 – CE marking becomes mandatory for lockcases, hinges, panic-/emergency devices, door closers, hold open devices and coordinators intended for use on fire/escape doors





We are here

Thank you!

Questions are welcome!



Sometimes we feel
like....

